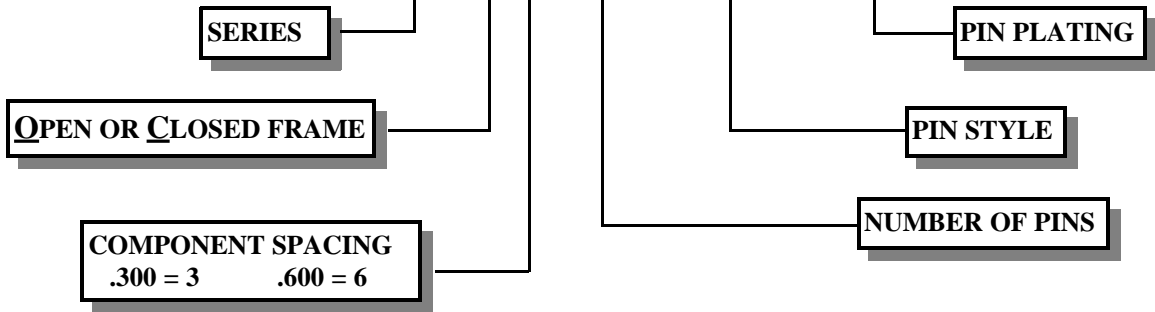


# ELEVATED SOCKETS

**ATE O 3 - 16 - 0031H - 010**



NO. OF PINS	FIGURE	"A" DIM MAX	"B" DIM MAX	"C" DIM MAX	PART NUMBER
8	1	7.62 / .400			ATE03-08-0031H-010
14	2	10.16 / .700			ATE03-14-0031H-010
16	3	17.78 / .800			ATE03-16-0031H-010
18	4	20.32 / .900	10.16 / .400	7.62 / .300	ATE03-18-0031H-010
20	5	22.86 / 1.000			ATE03-20-0031H-010
24	6	30.48 / 1.200			ATE03-24-0031H-010
24	7	30.48 / 1.200			ATE06-24-0031H-010
28	8	35.56 / 1.400			ATE06-28-0031H-010
32	9	40.64 / 1.600	17.78 / .700	15.24 / .600	ATE06-32-0031H-010
36	10	45.72 / 1.800			ATE06-36-0031H-010
40	11	50.80 / 2.000			ATE06-40-0031H-010

**FEATURES:**

Insulator: Thermoplastic polyester, UL rated 94V-0

Two piece, machined socket terminal  
 inner contact - beryllium copper, gold plated  
 Outer shell - brass, tin or gold plated

Closed frame construction for maximum stability

Pin Plating: SEE PRECEDING PAGE

Tapered entry socket for ease of insertion

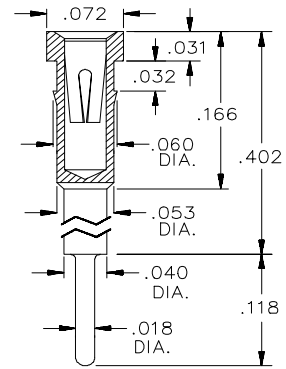
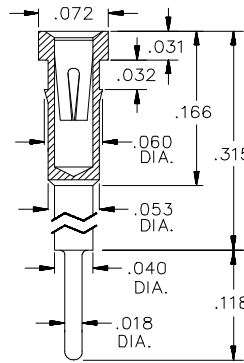
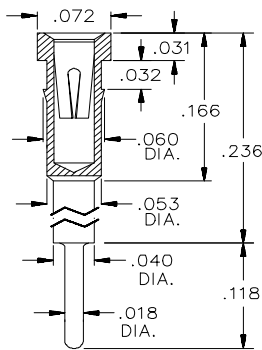
Component side by side and end to end grouping

Custom designs and loading upon request

Open frame construction for maximum cooling

Hi-Temp alternatives available for IR and Vapor phase soldering

Standard clip style: H430 others available upon request



**PIN STYLES**

**0031H**

**0032H**

**0033H**