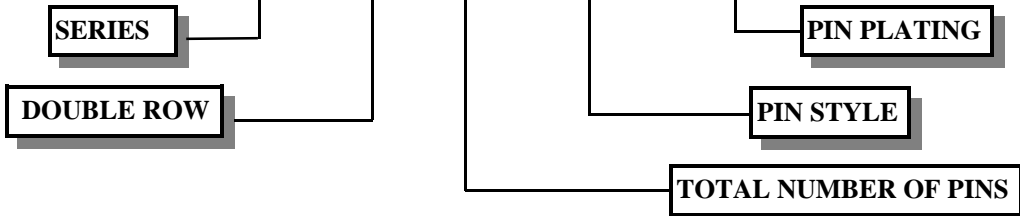


# DUAL ROW STRIP HEADERS

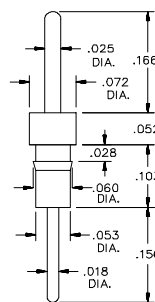
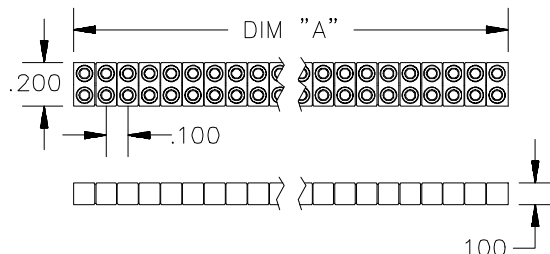
## SHXX - 2 X 04 - 0011H - 010



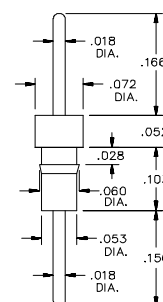
PINS IN EA. ROW	TOTAL NO. OF PINS	DIM "A"	PART NUMBER SH SERIES CARRIER .100 THICK PLASTIC	PART NUMBER SL SERIES CARRIER .050 THICK PLASTIC
2	4		SHXX-2x04-XXXX-XXX	SLXX-2x04-XXXX-XXX
3	6		SHXX-2x06-XXXX-XXX	SLXX-2x06-XXXX-XXX
4	8		SHXX-2x08-XXXX-XXX	SLXX-2x08-XXXX-XXX
5	10		SHXX-2x10-XXXX-XXX	SLXX-2x10-XXXX-XXX
6	12		SHXX-2x12-XXXX-XXX	SLXX-2x12-XXXX-XXX
7	14		SHXX-2x14-XXXX-XXX	SLXX-2x14-XXXX-XXX
8	16		SHXX-2x16-XXXX-XXX	SLXX-2x16-XXXX-XXX
9	18		SHXX-2x18-XXXX-XXX	SLXX-2x18-XXXX-XXX
10	20		SHXX-2x20-XXXX-XXX	SLXX-2x20-XXXX-XXX
11	22		SHXX-2x22-XXXX-XXX	SLXX-2x22-XXXX-XXX
12	24		SHXX-2x24-XXXX-XXX	SLXX-2x24-XXXX-XXX
13	26		SHXX-2x26-XXXX-XXX	SLXX-2x26-XXXX-XXX
14	28		SHXX-2x28-XXXX-XXX	SLXX-2x28-XXXX-XXX
15	30		SHXX-2x30-XXXX-XXX	SLXX-2x30-XXXX-XXX
16	32		SHXX-2x32-XXXX-XXX	SLXX-2x32-XXXX-XXX
17	34		SHXX-2x34-XXXX-XXX	SLXX-2x34-XXXX-XXX
18	36		SHXX-2x36-XXXX-XXX	SLXX-2x36-XXXX-XXX
19	38		SHXX-2x38-XXXX-XXX	SLXX-2x38-XXXX-XXX
20	40		SHXX-2x40-XXXX-XXX	SLXX-2x40-XXXX-XXX
21	42		SHXX-2x42-XXXX-XXX	SLXX-2x42-XXXX-XXX
22	44		SHXX-2x44-XXXX-XXX	SLXX-2x44-XXXX-XXX
23	46		SHXX-2x46-XXXX-XXX	SLXX-2x46-XXXX-XXX
24	48		SHXX-2x48-XXXX-XXX	SLXX-2x48-XXXX-XXX
25	50		SHXX-2x50-XXXX-XXX	SLXX-2x50-XXXX-XXX
26	52		SHXX-2x52-XXXX-XXX	SLXX-2x52-XXXX-XXX
27	54		SHXX-2x54-XXXX-XXX	SLXX-2x54-XXXX-XXX
28	56		SHXX-2x56-XXXX-XXX	SLXX-2x56-XXXX-XXX
29	58		SHXX-2x58-XXXX-XXX	SLXX-2x58-XXXX-XXX
30	60		SHXX-2x60-XXXX-XXX	SLXX-2x60-XXXX-XXX
31	62		SHXX-2x62-XXXX-XXX	SLXX-2x62-XXXX-XXX
32	64		SHXX-2x64-XXXX-XXX	SLXX-2x64-XXXX-XXX
33	66		SHXX-2x66-XXXX-XXX	SLXX-2x66-XXXX-XXX
34	68		SHXX-2x68-XXXX-XXX	SLXX-2x68-XXXX-XXX
35	70		SHXX-2x70-XXXX-XXX	SLXX-2x70-XXXX-XXX
36	72		SHXX-2x72-XXXX-XXX	SLXX-2x72-XXXX-XXX
37	74		SHXX-2x74-XXXX-XXX	
38	76		SHXX-2x76-XXXX-XXX	
39	78		SHXX-2x78-XXXX-XXX	
40	80		SHXX-2x80-XXXX-XXX	

**PIN PLATING DESIGNATIONS**  
 0 = TIN  
 1 = 10u" GOLD

FOR OTHER BD TO BD STYLE PINS SEE PAGE 3

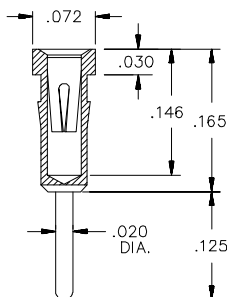


0235

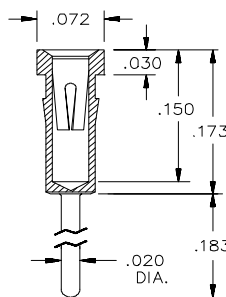


0214

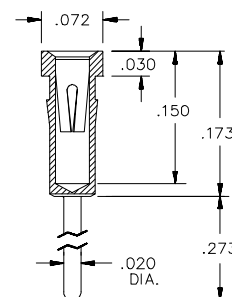
SERIES		
SH/SL HG	HIGH TEMP GLASS	.093 THICK
SH/SL HP	HIGH TEMP PLASTIC	.117 THICK
SH/SL SC	STANDARD GLASS	.093 THICK
SH/SL SP	STANDARD PLASTIC	.100 THICK
SH/SL TP	STANDARD PLASTIC	.070 THICK
		.050 THICK



0011H



0017H



0018H

**PIN STYLES**