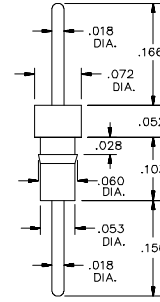
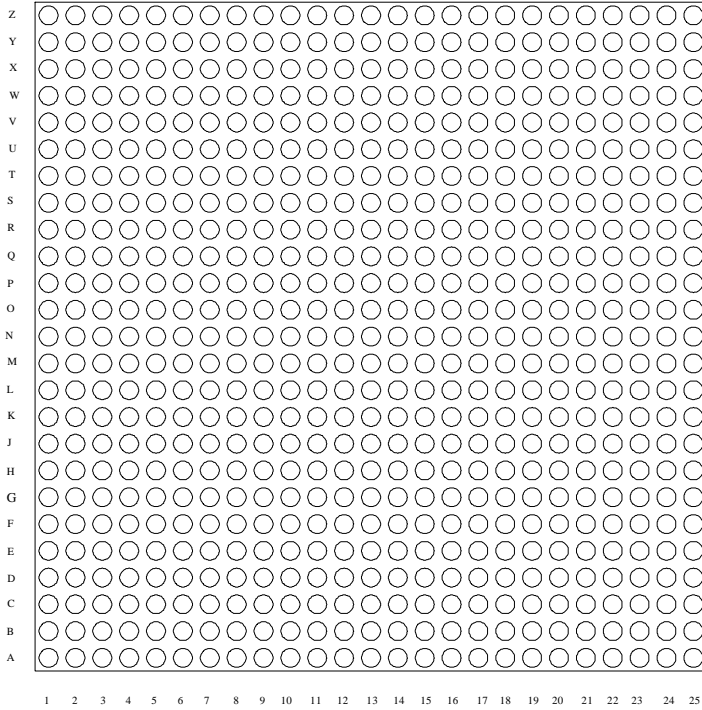
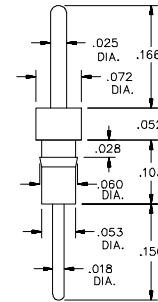


BOARD TO BOARD GRID ARRAY SOCKETS

.100 GRID FOOT PRINT PATTERN



PIN STYLE 0214



PIN STYLE 0235

PIN PLATING DESIGNATIONS

- 0 = TIN
- 1 = 10u" GOLD

Hi-Temp alternatives available for IR and Vapor phase soldering

144 - X - XX - 15 XX - 0235 - 1

NUMBER OF PINS

STYLE OF INSULATOR

0 = OPEN FRAME 1= CLOSED FRAME 2= FULL MATRIX

INSULATOR

02= GLASS EPOXY 06= MOLDED POLYESTER

MATRIX SIZE

PATTERN STYLE

PIN STYLE

PIN PLATING

See page 24 for design guide work sheet