

INSULATORS

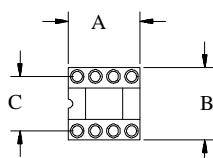


FIG. 1

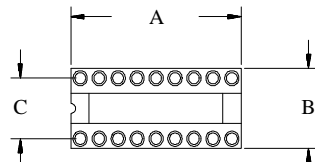


FIG. 4

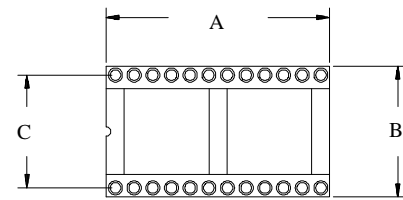


FIG. 7

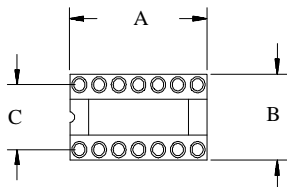


FIG. 2

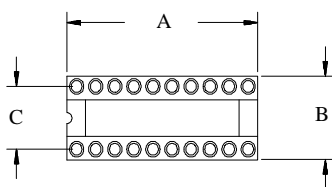


FIG. 5

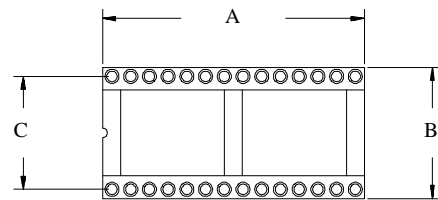


FIG. 8

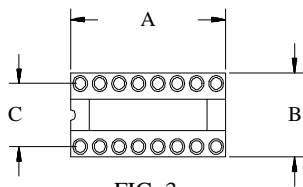


FIG. 3

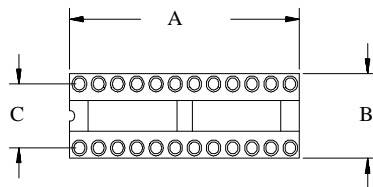


FIG. 6

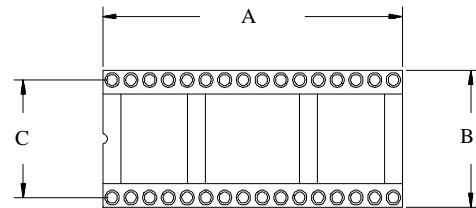


FIG. 9

PIN PLATING SPECIFICATIONS

- 000 = TIN SHELL / TIN CLIP
- 010 = TIN SHELL / 10u" GOLD CLIP
- 030 = TIN SHELL / 30u" GOLD CLIP
- 110 = 10u" GOLD SHELL / 10u" GOLD CLIP
- 130 = 10u" GOLD SHELL / 30u" GOLD CLIP

For available closed frame insulators see page 9

Do you have a specialty application, call our facility and we will help you resolve your interconnect requirement.

Other products that we offer are:

- DIP TO DIP ADAPTERS
- ZIP TO DIP ADAPTERS
- QFP ADAPTERS
- ELEVATED SOCKETS
- HORIZONTAL DISPLAY SOCKETS
- BOARD TO BOARD HEADERS
- PIN GRID ARRAY SOCKETS
- CRYSTAL AND RELAY SOCKETS
- 1 & 2 ROW BREAK-A-WAY STRIPS
- PLCC DEVICE CARRIERS
- SOIC ADAPTERS
- PGA ADAPTERS FOR SOCKET TERMINAL BOARDS
- PLCC ADAPTERS FOR SOCKET TERMINAL BOARDS
- SOCKET TERMINAL BOARDS / IC PLUGGABLE PANELS

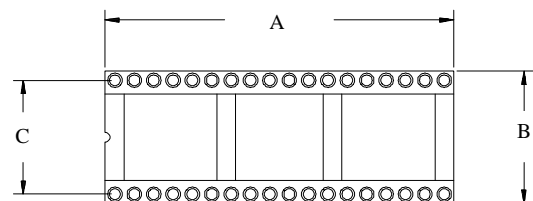


FIG. 10

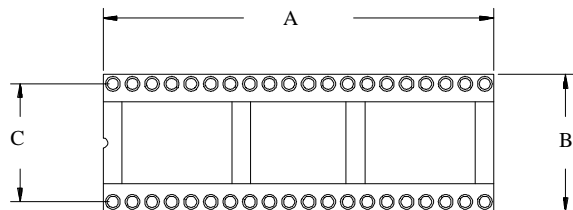


FIG. 11