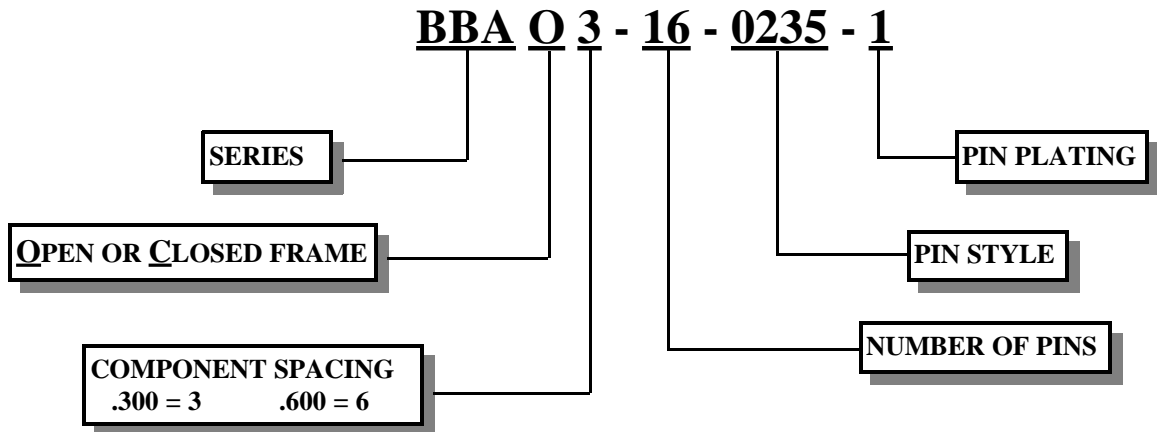


BOARD TO BOARD ADAPTER HEADERS



NO. OF PINS	FIGURE	"A" DIM MAX	"B" DIM MAX	"C" DIM MAX	PART NUMBER
8	1	7.62 / .400			BBA03-08-0235-1
14	2	10.16 / .700			BBA03-14-0235-1
16	3	17.78 / .800			BBA03-16-0235-1
18	4	20.32 / .900	10.16 / .400	7.62 / .300	BBA03-18-0235-1
20	5	22.86 / 1.000			BBA03-20-0235-1
24	6	30.48 / 1.200			BBA03-24-0235-1
24	7	30.48 / 1.200			BBA06-24-0235-1
28	8	35.56 / 1.400			BBA06-28-0235-1
32	9	40.64 / 1.600	17.78 / .700	15.24 / .600	BBA06-32-0235-1
36	10	45.72 / 1.800			BBA06-36-0235-1
40	11	50.80 / 2.000			BBA06-40-0235-1

FEATURES:

Insulator: Thermoplastic polyester, UL rated 94V-0

Extender headers are the ideal interconnection between a Mother and a Daughter card.
See preceding page for optional lengths

Closed frame construction for maximum stability

Pin Plating: 0 = Tin 1 = 10u" Gold

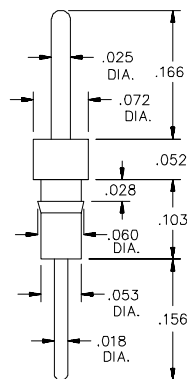
We will also make custom pins for your application

Component side by side and end to end grouping

Custom designs and loading upon request

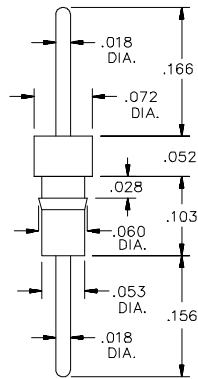
Open frame construction for maximum cooling

Hi-Temp alternatives available for IR and Vapor phase soldering

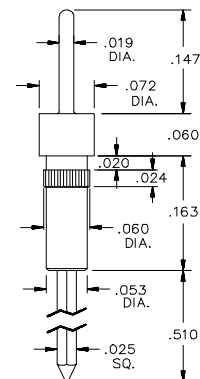


PIN STYLES

0235



0214



0261