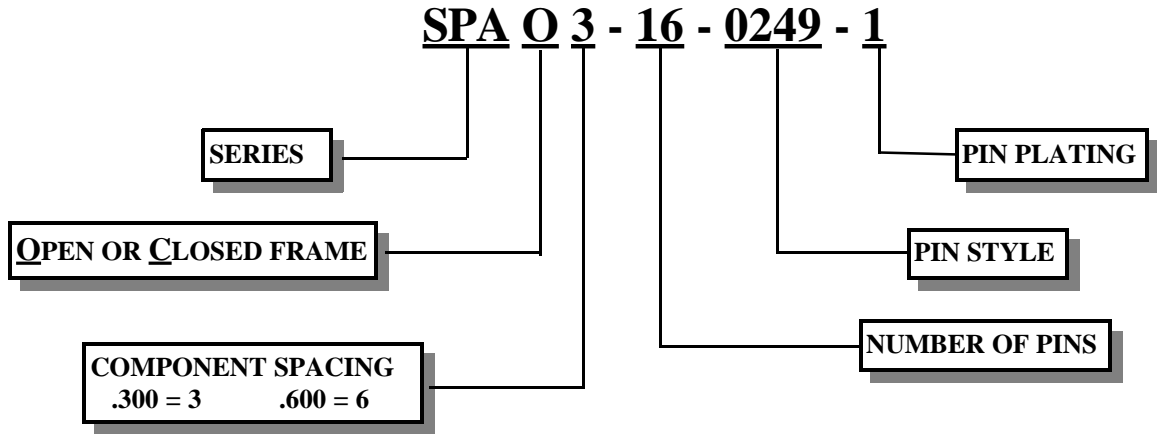


# SLOTTED PIN ADAPTER HEADERS



NO. OF PINS	FIGURE	"A" DIM MAX	"B" DIM MAX	"C" DIM MAX	PART NUMBER
8	1	7.62 / .400			SPA03-08-0249-1
14	2	10.16 / .700			SPA03-14-0249-1
16	3	17.78 / .800			SPA03-16-0249-1
18	4	20.32 / .900	10.16 / .400	7.62 / .300	SPA03-18-0249-1
20	5	22.86 / 1.000			SPA03-20-0249-1
24	6	30.48 / 1.200			SPA03-24-0249-1
24	7	30.48 / 1.200			SPA06-24-0249-1
28	8	35.56 / 1.400			SPA06-28-0249-1
32	9	40.64 / 1.600	17.78 / .700	15.24 / .600	SPA06-32-0249-1
36	10	45.72 / 1.800			SPA06-36-0249-1
40	11	50.80 / 2.000			SPA06-40-0249-1

## FEATURES:

Insulator: Thermoplastic polyester, UL rated 94V-0

.025 square tail styles available

Consult factory for other style availability

Closed frame construction for maximum stability

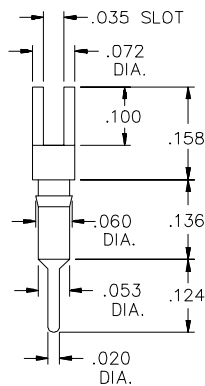
Pin Plating: 0 = Tin 1 = 10u" Gold

Slotted style (with flat) for mounting discrete components  
Component side by side and end to end grouping

Custom designs and loading upon request

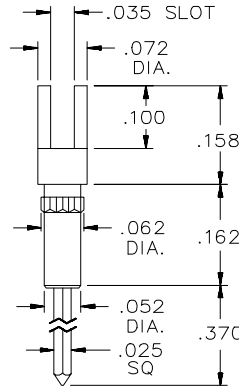
Open frame construction for maximum cooling

Hi-Temp alternatives available for IR and Vapor phase soldering

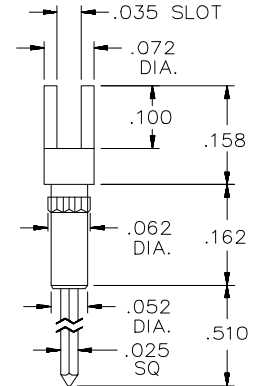


**PIN STYLES**

**0249**



**0259**



**0260**